

SystemsLink Online Portal - Key Capabilities

This document is intended to provide a brief overview of capabilities, should you require any specific guidance, please contact EMEnvironment@admin.cam.ac.uk with your query.

Introduction

The SystemsLink online portal has a variety of functions which enable building users and custodians to understand their energy usage on a day +1 basis.

The online system provides the following main functions:

- A clear and wide ranging set of reports to visualise and interpret utility consumption
- Enter direct readings for profile extrapolation where no AMR is present
- Customisable dashboards

Logging In

You are required to log in to view data and use the online SystemsLink portal. When you visit the hosting website <https://cam.energymanagerlive.com> you will see the screen shown in figure 1.

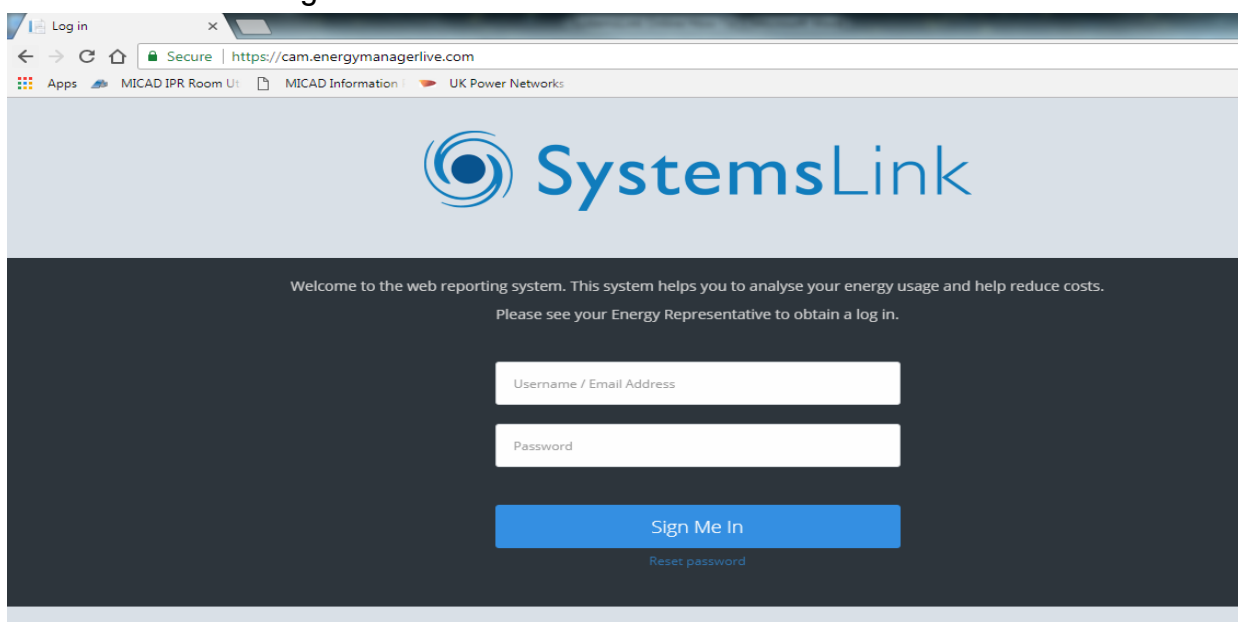


Figure 1. Login screen for the SystemsLink online portal

A username and password will be provided to you by your system administrator, if you have not been provided with one, please email EMEnvironment@admin.cam.ac.uk to request access, and a member of the University's Environment & Energy team will get back to you.

Reports

A variety of reporting options allows the user to view consumption figures and cost data for all utilities, where a data set exists, across each site. Reports are available in tabular, graphical and excel format, depending upon the report selected. These reports allow the user to identify seasonal trends in consumption at a high level.

Reports can be for a single supply, or can aggregate multiple supplies to provide a site wide data analysis. Reports can be compared with a previous year, allowing for longer term variance analysis.

Dashboards

In addition to the standard reporting options available, dashboards (figure 2.) can be configured by your administrator to present multiple reports and data sets, displaying several elements on a single screen. This key area of the site should be your default screen when logging in and can be used to quickly view important sites and data sets.

Graphs in dashboard view can be used to show multiple periods: days, weeks, months or years, making ad hoc comparisons quick and easy.

The following elements are available for display:

- League table comparing usage between sites
- Graphic to show energy consumption in equivalent everyday terms
- A gauge comparing actual performance with target for a chosen utility (requires target to be set in main database)
- Graph comparing actual performance against a target (requires target to be set in main database)
- Display energy certificate (DEC) for the property (not currently available as DEC's not lodged with SystemsLink)
- A message
- Pie chart visualising a breakdown of usage by utility
- Site description
- Footprint report, presents a heat map style presentation of usage (requires AMR)
- Year-on-year comparison of a chosen utility

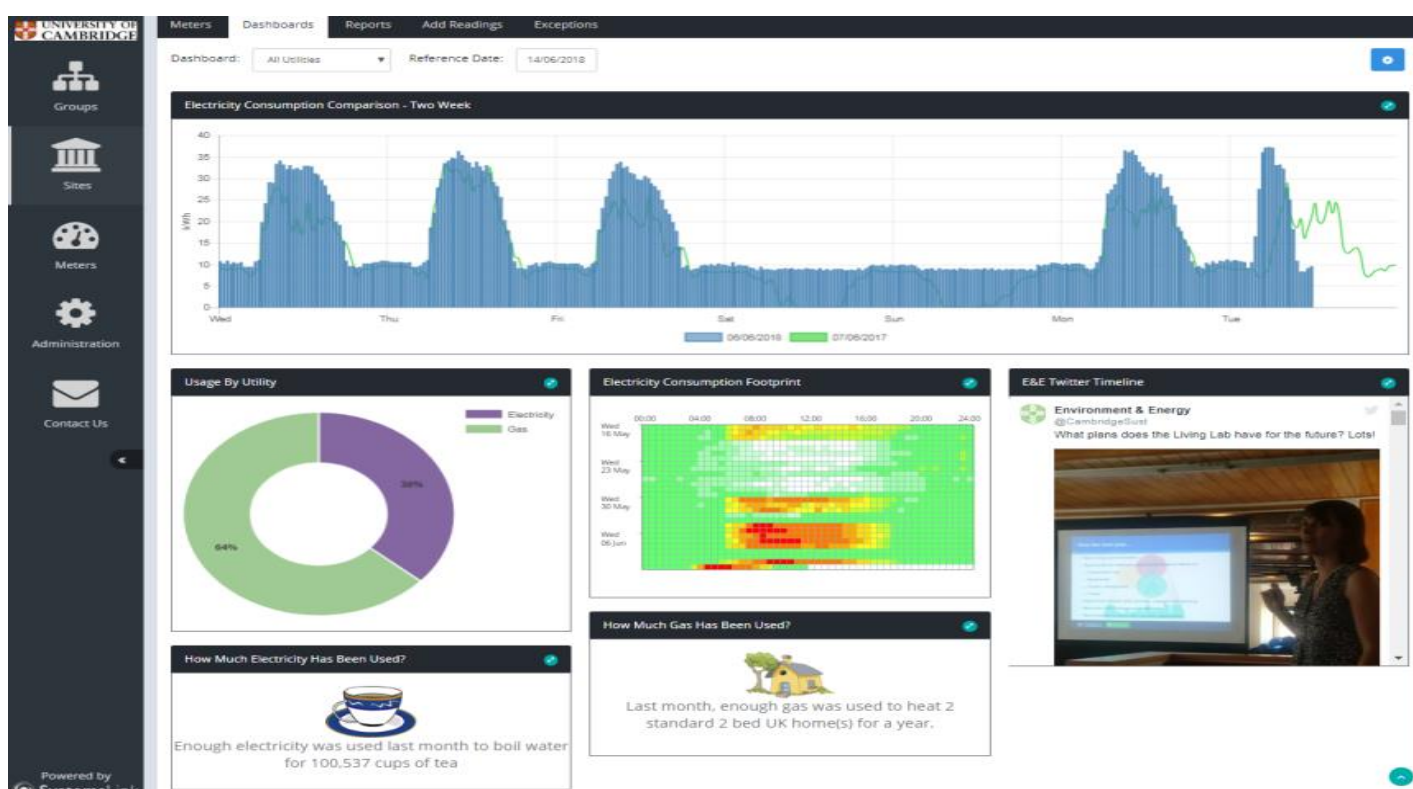


Figure 2. Example of an online dashboard in the SystemsLink platform

Types of Data - Profile, Invoice and Direct

In addition to running standard reports, users can view, and download in some cases, raw data for a given data set. N.B. only profile data is available to download from the online portal, and requires access to be granted by your system administrator. If you require profile data downloads but have not been granted rights, please contact your administrator.

Once you have logged in, you will be presented with one of the following: a dashboard, data set list (if one site accessible) or a site list (if multiple sites accessible). The left hand side of the page is used to navigate around the major sections of the site, with the horizontal ribbon providing contextual options. Figure 3 shows reports tab which becomes available once users select a site. On this tab, users can select one of the three data modes, this will alter what options and reports are available. Not all data sets have all three modes available in some instances the user may not be able to access certain data sets in each mode.

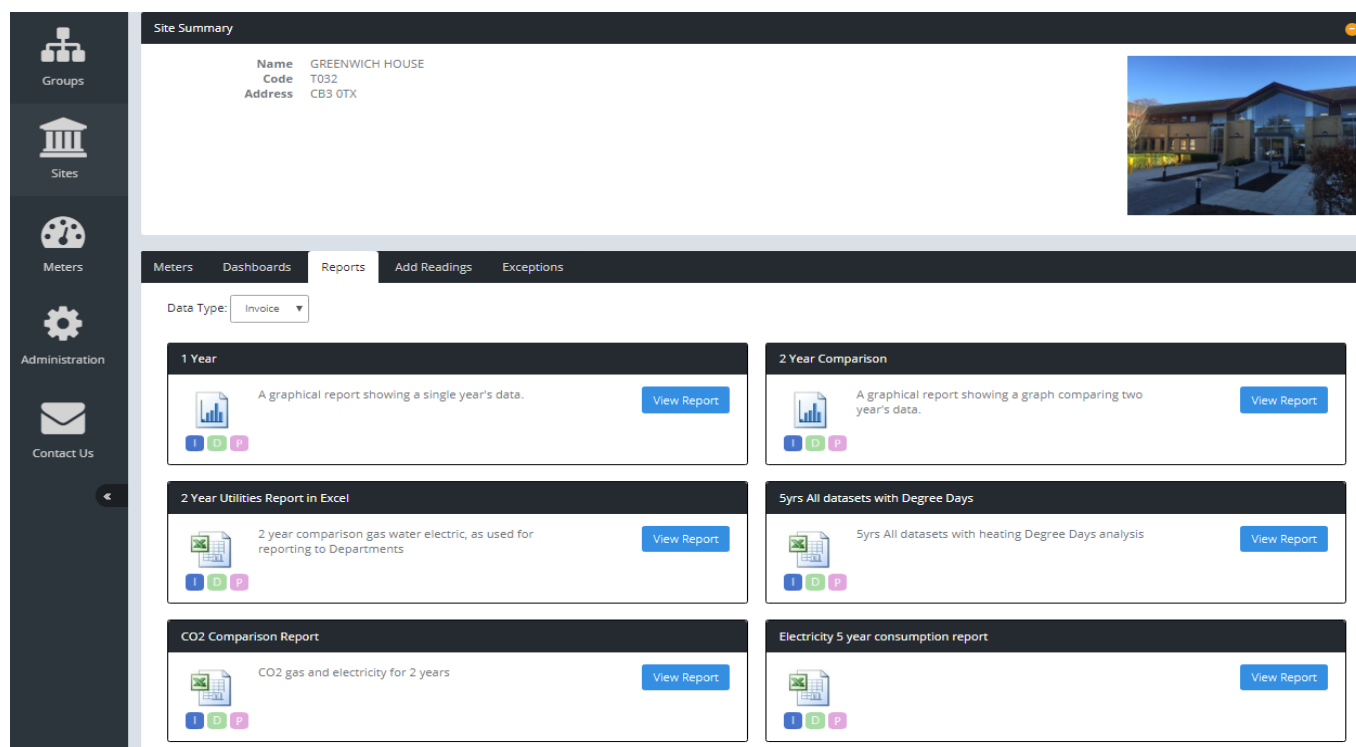


Figure 3. Reporting options now show which data mode they available in

Profile

Profile data is very powerful, allowing for advanced analysis by the user in Excel or other spreadsheet based software. It is provided by AMR to the University's database and is populated on a day+1 basis.

Direct

Direct data contains actual readings taken by the University. This data can be highly accurate, but should be used with caution as readings are taken a handful of times through the year. It will not provide a good profile of usage across the year, but can provide annual quantity (AQ) information.

Invoice

Invoice data is imported by University staff, it provides cost analysis for sites, but data should be used with caution, as invoices are often estimated by the supplier, leading to over or under consumption by month when undertaking analysis.